



Debra Gilmore IALD, MIES
Gilmore Lighting Design



"Simplicity is the ultimate sophistication."
-Leonardo da Vinci

Establishing Simple Concepts offers many project benefits including:

- Owner and project team acceptance of design
- Construction feasibility higher
- Straightforward budgeting
- Streamlined Submittal process

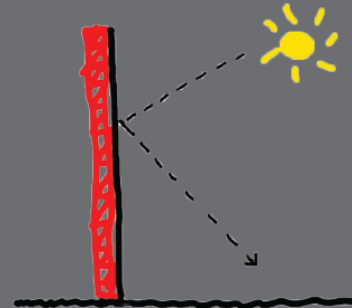
Elements of a Simple Concept include:

- Illustrated and graphically clear ideas based on project goals
- Construction schedule and budget adherence
- Minimal fixture types
- Sensor driven automated controls

Angle of Incidence

=

Angle of Reflection



Basic physics principle used as Simple Concept -
see Case Study below

Case Study - Church Christinae at Lights in Alingsas

The top graphic from our 2016 holiday card references the 17 United Nations Sustainability Goals. Those goals were thematic to [Lights in Alingsas](#), an international educational lighting design workshop for students where I participated as a workshop head in September.

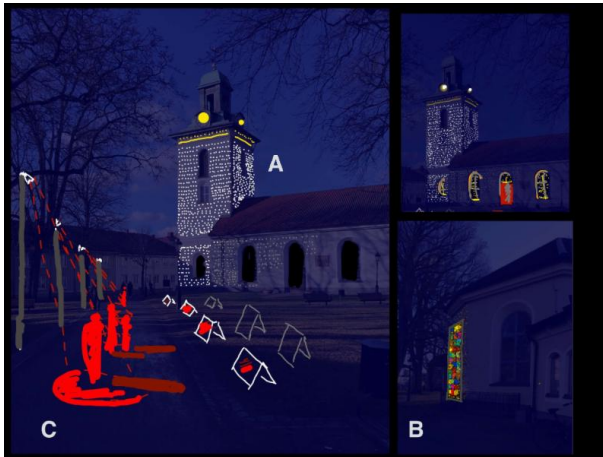
Together with 7 other international lighting designers, and 60 lighting design students traveling from 54 countries, 7 different groups created unique exterior installations in 6 days. The students were guided through site selection, concept development, and installed controllable lighting equipment for the town of Alingsas.

Sponsored by Alingsas Energi, the workshop results comprise the majority of a 5-week public event, where visitors have been coming annually for the past 17 years. I selected Church Christinae as my workshop site.

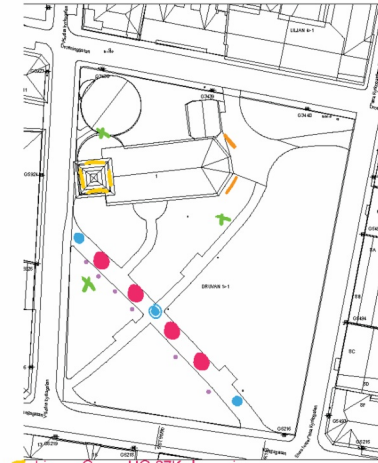


Concept: "A Time to Reflect"

Using the UN Goal #15 Climate Action, and personal and physical properties of reflection, 3 primary site elements were illuminated: primary paths, clock tower, and church windows. Hierarchically guided by light, the visitor chooses which path to take - a metaphor to climate action



Concept Rendering

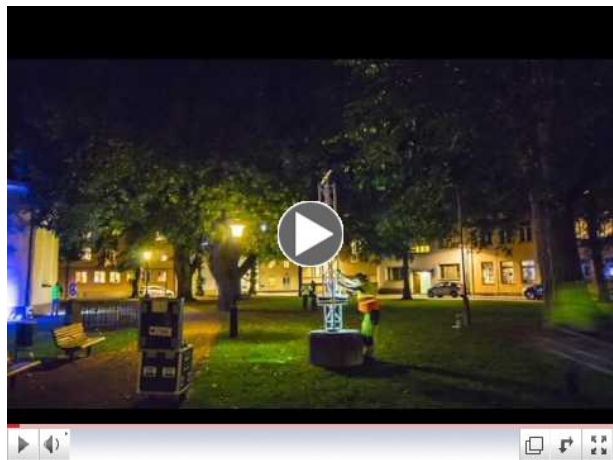


Concept Plan

Process



Time Lapse - Site Planning



Time Lapse - Projector Truss Construction



2 ton concrete truss tower base arrives



Church interior window sill inspiring geometry of tower



Students nearing completion of tower



Students Marita, Tina & Aviad



Student electricians Christian & Gustav



Closing day cleanup at Headquarters



Tech Tent



Students with HQ team



Workshop certificates in hand

Time lapse photography by: Aviad Fried

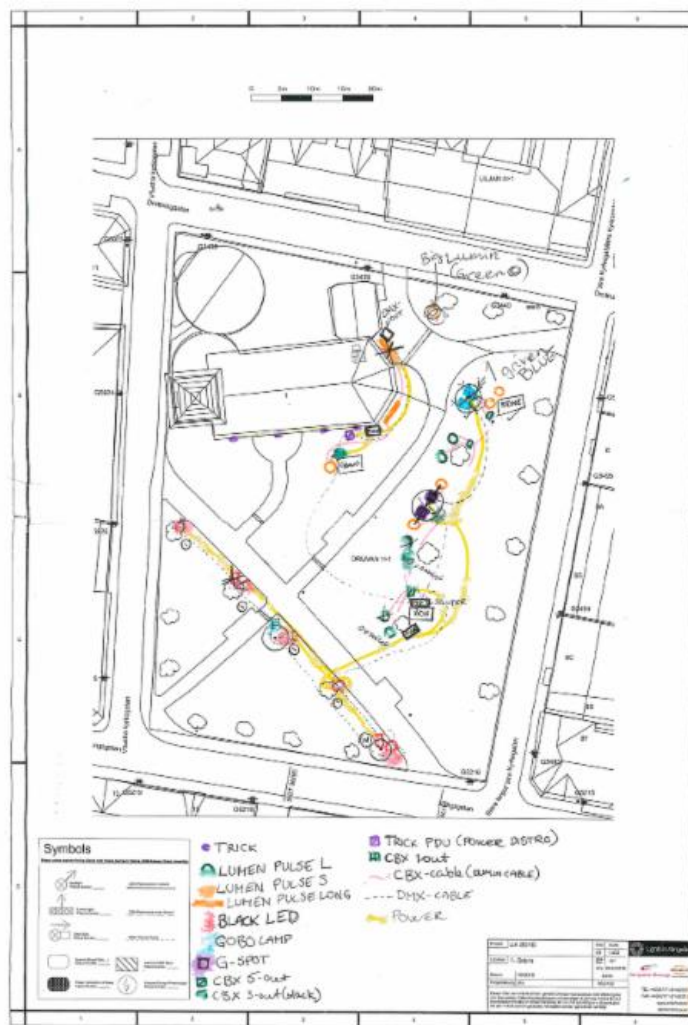
Final Installation





Final installation photography by: Patrik Gunnar

Student Presentation



Site 1.
Representing team Debra Gilmore

"A time to reflect"

① We are a part of team Gilmore which is the first site of Lights in Alingsås 2016, where Enlightenment is the theme.

② Our site is located in the middle of the city of Alingsås, Christina church. It has very strong elements like the church and two pathways, we also realised that the strong geometry, forms the primary path.

Our site surrounded by residential buildings.

③
④

⑤ This is how goal nr 13 Climate Action has influenced our concept.

- Right now we are in the happening, we have to ask ourselves two questions:
• Are we going to walk in the same direction as we are doing today, or
• Are we going to take responsibility for our actions for what is happening right now and work towards future, next generation, our kids!

⑥ Our actions and choices we make creates the reflections of future. We're all a part of it, we consume it, our habits must contribute to change, we have to take a detour! If no one will do it mother earth will reveal us with a reflection of glare, the contrasts of our habits and the consuming of our assets will collide. It's a question of time....
A time to reflect!

We are team Debra Gilmore, site 1.

Thank you!

I'd like to thank Alingsås Energi, Estrad management and the entire town of Alingsås for hosting such an amazing event. Congratulations to students Christian Andersson, Gustav Blomgren, Gustave Mattsson, Trinetra Manickavasagam, Marita Storheim, Anton Gustafsson, Jon Karlsen, Shahab Zeini Aslani, Karin Lindin & Aviad Fried. It was a great pleasure to work with all of you!

Enjoy the awesome [closing ceremony](#) with amazing performers. Designer interviews start at 12:28/44:42

For 19 years, Gilmore Lighting Design, a certified woman owned business, has developed a proven award winning reputation. Gilmore has designed millions of square feet for commercial lighting projects including government facilities, corporate headquarters, institutional campuses, parks and zoos; while utilizing 35 years of experience to wisely integrate appropriate technologies, including Revit use, into projects.

[VISIT OUR WEBSITE](#)

